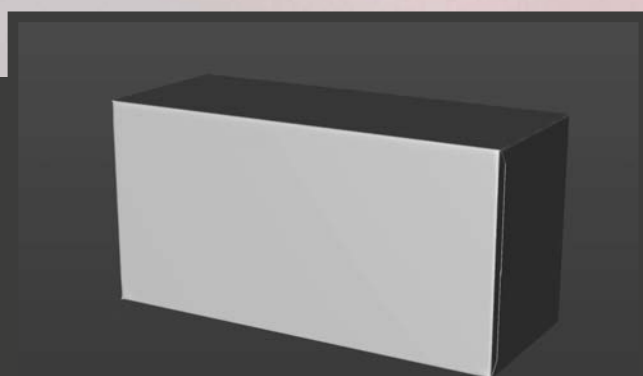




Final Render



3D Model



FBX and OBJ file formats are compatible with software:
Maya, 3DS Max, Mudbox, AutoCAD, Inventor, Motion Builder, Revit, Softimage, ZBrush, MODO, 3D Coat, Keyshot SketchUp, Adobe Dimension CC, Rhinoceros, Lightwave, Vue xStream, SolidWorks, Houdini, Blender, Unreal Engine etc.

Carton Box for 10x330ml Sleek Can

Model_0000953

What's Included:

- Packaging 3D Model in FBX file format
- Cinema 4D R16+ Scene File (Octane 4x .C4D)
- 4K Textures with layered TIFF file and UV-Mesh HDRI, Materials (Octane for C4D)
- UV layout ready
- Renders, PDF readme
- Additional optimized Adobe Dimension 3.4 file

Note: you should have Octane Render 4+ get installed to render Cinema 4D scene file.

DOES NOT INCLUDE THE CAN 3D MODEL





wa
 THE ART OF 3D MODELING
 www.Waldemar-Art.com
 MADE IN GERMANY

©2023 WaldemarArt Design Studio
 www.Waldemar-Art.com

• PDF ready
 • Renders (2560x1707px)
 • UV layout ready
 • 1000x1000 pixels, 300dpi, RGB
 • Textures with layered TIFF file and UV-maps
 • Cinema 4D R16+ scene (.C4D) Octane 3.0x
 • 3D model in OBJ and FBX file formats

What's included:
 10 Sleek Beer/Soda Can 330ml
 Professional highly detailed 3D model
 of Carton Packaging for

**CARTON BOX
 FOR SLEEK BEER/SODA CAN**

Benefits:
 • Packaging 3D model
 made of original keylines.
 • Premium highly detailed
 packaging 3D model.
 • UV-ready.
 • Layered TIFF Textures
 with 4k resolution.
 • Free updates for customer
 Best for close up
 • Easy to use

